

**Weather Forecasts
Applied Meteorology
Air Pollution Control
Geoinformatics**

Fabrikstrasse 14, CH-3012 Bern
Tel. +41 (0)31-307 26 26
Fax +41 (0)31-307 26 10
e-mail: office@meteotest.ch
www.meteotest.ch



Bern, June 17, 2008

METEONORM 6.0

Installation Instructions

Author: Christoph Schilter, *METEOTEST*

1. Note

You can find all information and files on the internet in the following website:

<http://www.meteonorm.com>

Compared to the CD version, the download provides you with the most recent version of *METEONORM*.

Please visit the *METEONORM* website regularly on order to get the latest *METEONORM* patch.

2. Download

In the download section you will find the most recent version of *METEONORM*. At the time of writing this manual it is the version 6.0.2.2 which includes the .NET framework. It is a ZIP file with a size of about 115 MB.

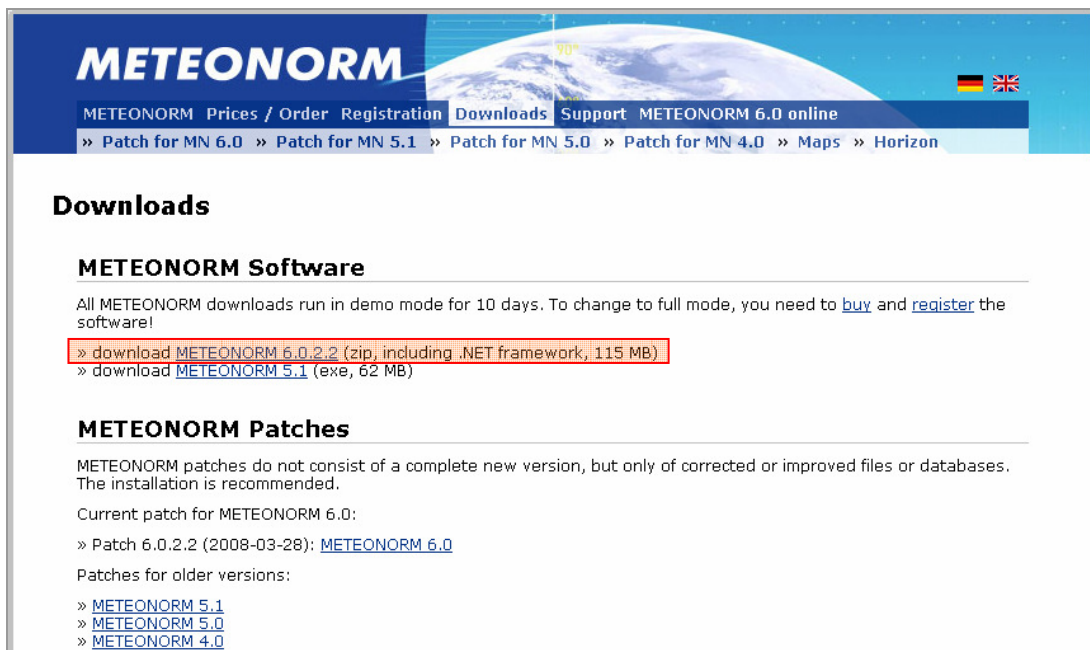


Fig. 1: Screenshot of the download area.

http://www.meteonorm.com/media/downloads/mn_60.zip

You need to download and save the file 'mn_60.zip' on your local machine. It is easiest to retrieve if you save it on your desktop.

3. Unzip

Unzip the compressed file 'mn_60.zip'. Most machines have software installed which can do that. Just double click the ZIP file.

A software which can uncompress is 7-zip, a freely available software under the GNU LGPL license:

<http://www.7-zip.org/>

If you successfully uncompressed the file you will get a folder with the following files:

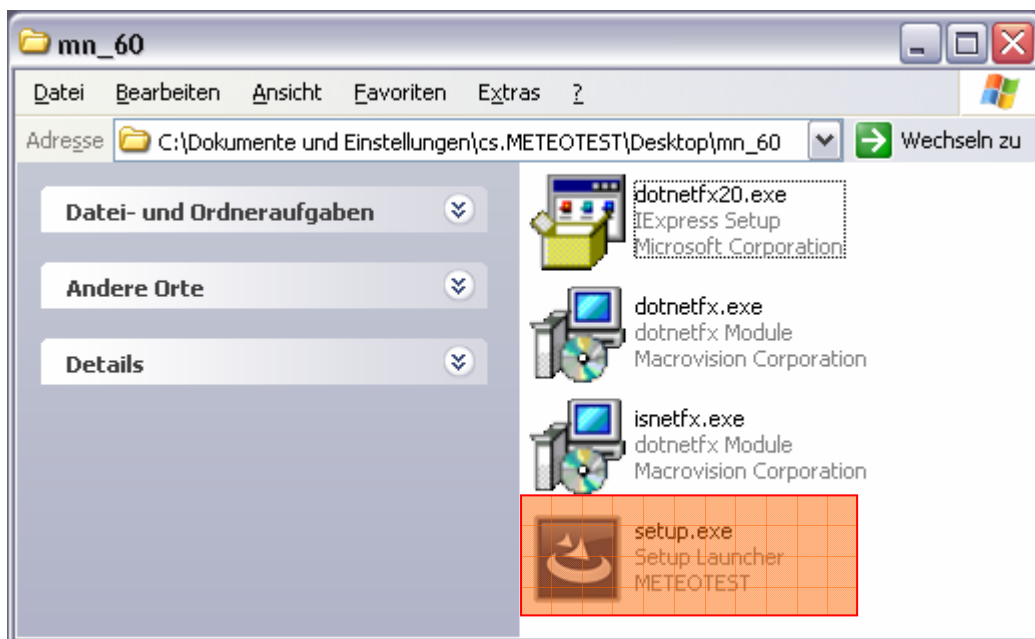


Fig. 2: *METEONORM* folder with the setup files.

3.1. Setup

A double click on the 'setup.exe' file will start the installation process. This will take several minutes and need some interaction which should be self-explaining.

The installation process will detect if the system needs to install the .NET framework. You don't have to do it manually.

3.2. Installation folder

METEONORM proposes to install its files into the following folder:

[c:\Programme\METEOTEST\MN_60\](c:\Programme\METEOTEST\MN_60)

You can change this path. Please make sure that **METEONORM** has write authorizations on the installation folder! Otherwise **METEONORM** will not work properly.

After a successful installation you can start working with **METEONORM** at once. Without registration, it will be in a demo mode for 10 days. After this period it will be locked. In demo mode you can not save the results.

4. Registration

To activate your copy of **METEONORM** you need to register your license at **METEOTEST**. In order to do that the **CD- or serial-number** is required which you will find on the jewel case or in the invoice information. For example it will look as follows:

600123

During the installation process, **METEONORM** generates the **installation code** on your local machine. This code is shown during the start up of **METEONORM**.

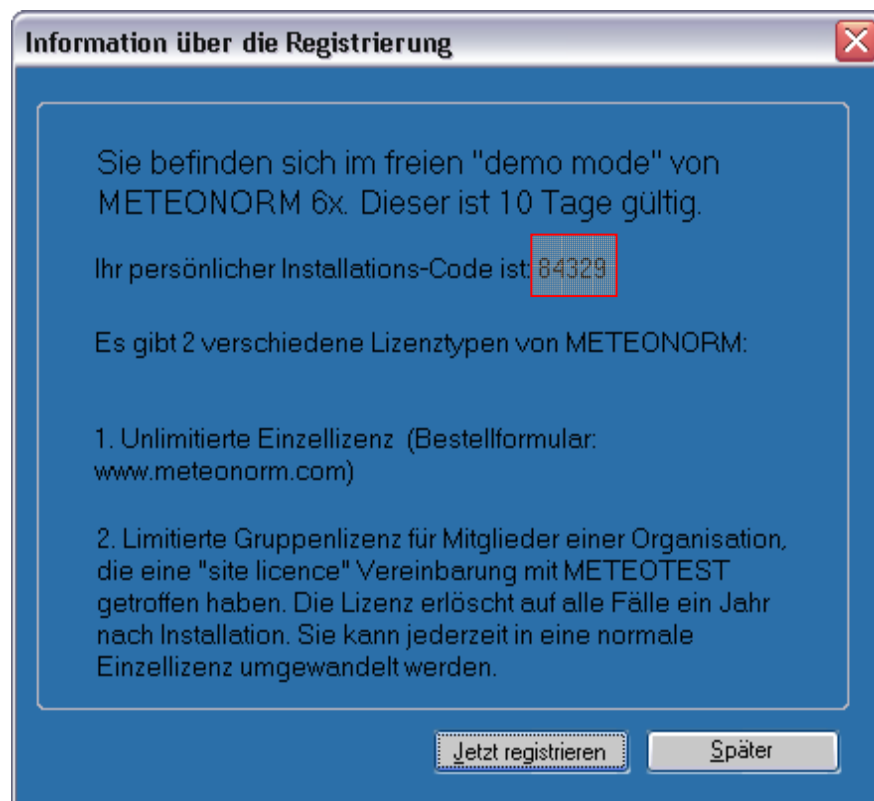


Fig. 3: Installation code.

In the online form on the website specified below, you need to fill in these codes and your contact information.

<http://www.meteonorm.com/pages/en/registrierung.php>

METEONORM

METEONORM Prices / Order **Registration** Downloads Support METEONORM 6.0 online

Registration

In order to get the password to run METEONORM in full mode, a registration is required.
Please have your CD number and the installation code at hand.

| | |
|-----------------------------------------------------|----------------------------------------------------------------------------------------------------------|
| Registration Type | <input checked="" type="radio"/> Full license <input type="radio"/> Tutorial license (1 year limited) |
| Software Type | <input type="radio"/> CD <input checked="" type="radio"/> Download |
| Serial no. on CD or from your reseller | 600123 6 digits |
| Installation code « shown at METEONORM startup » | 123456 5-6 digits |
| Institution code « only for tutorial license » | 5 digits |
| Local distributor (place of purchase) | METEOTEST Switzerland |
| Company | fim |
| Name | name |
| Surname | surname |
| Street & No. | street 1 |
| Postcode & City | 12345 city |
| Country | Switzerland CH |
| E-mail | me@fim.com |
| Get your password | <input type="button" value="Register"/> <input type="button" value="Reset"/> |

Password will be returned immediately after validation of your data

Fig. 4: Registration form.

Two different license types of **METEONORM** exist:

1. unlimited single license (**full license**). If you purchased this license, leave the institution code field empty.
2. limited group license for member of an organization (**tutorial license**). This license will work for a one year period. Choose the option "tutorial license" in the registration form. If you received an institution code from your organization, enter it in the corresponding field. Otherwise leave this field empty and you will receive the institution code together with the password.

Within a few hours (during working hours) you will receive an e-mail with the password.

4.1. Login

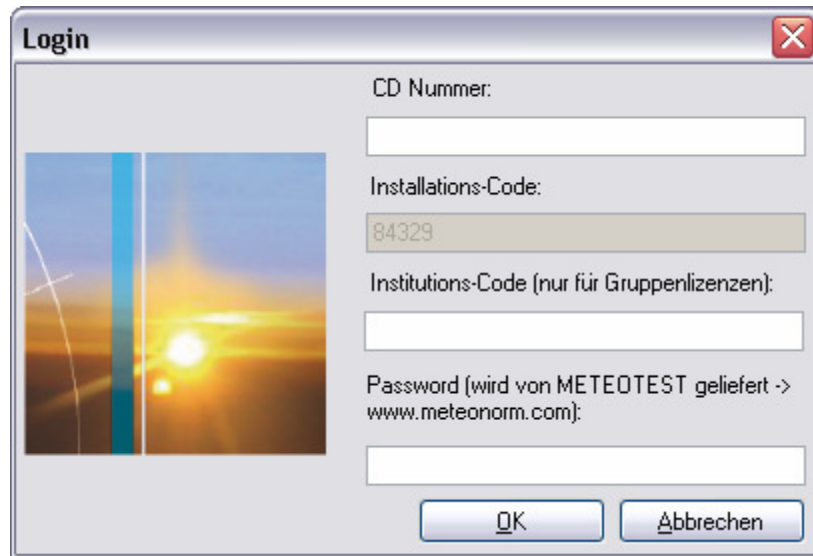


Fig. 5: Login.

After you received the password (and if necessary the institution code) you can proceed with the login. The login information only has to be filled in once.